

Name

Welded 2

Designer

Suzanne Tick

Style No.

4135

Collection

Fabric of Space

Use

Upholstery

Content

Face:

100% Tekloom TPE

Back:

100% Polyester Woven

Abrasion

Wyzenbeek

250,000+ double rubs

Special Characteristics

Bleach Cleanable

Environmental

Chemical Finish Free

DMF Free

Heavy Metal Free Dyes

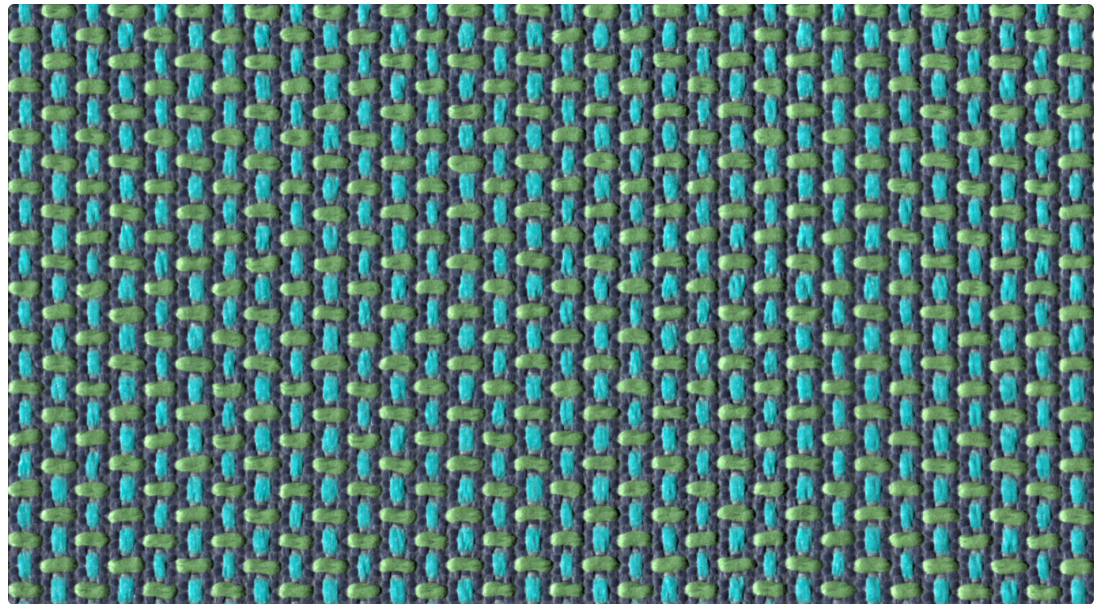
REACH Regulation

Compliant

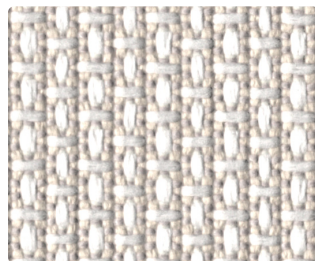
Complies with California

Section 01350 VOC

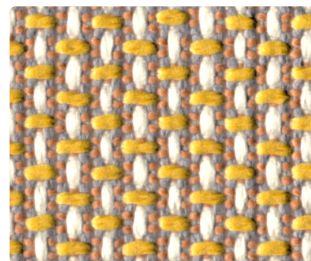
Emission Standards



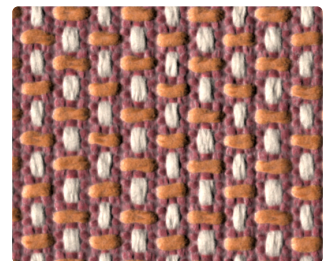
Lawn 4135-06



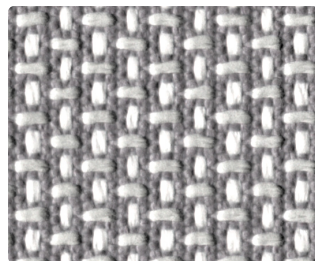
Salt 4135-01



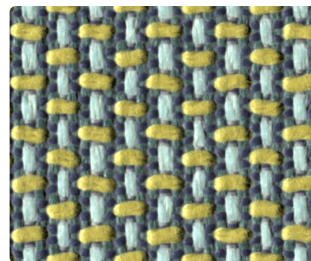
Nectar 4135-10



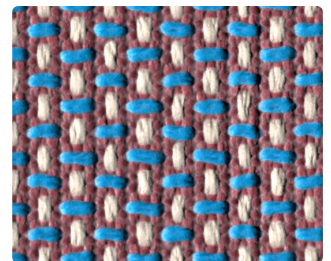
Red Earth 4135-09



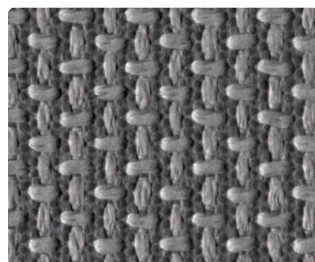
Quarry 4135-02



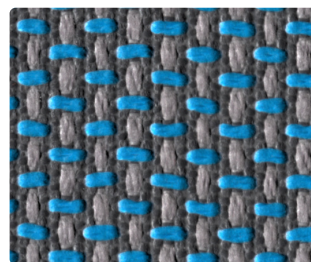
Herb 4135-05



Twilight 4135-08



Char 4135-03



Azure 4135-07



Thunder 4135-04

Name

Welded 2

Style No.

4135

Designer

Suzanne Tick

Specification

Use: Upholstery
Content: Face: 100% Tekloom TPE
Back: 100% Polyester Woven
Weight: 19.05 oz per linear yard
Width: 54"
Pattern Repeat: None
Directional: Yes

Finish

Inherently Ink and Denim Resistant

Performance

Abrasion: ASTM D4157 Wyzenbeek 250,000+ double rubs
Breaking Strength: ASTM D5034 Warp 567.9 lbf, Fill 431.3 lbf
Seam Slippage: ASTM D4034 Warp 102 lbf, Fill 108.5 lbf
Colorfastness to Light: AATCC 16, Grade 4-5 at 40 Hours
Colorfastness to Crocking: AATCC 8, Wet Class 5, Dry Class 5
Pilling: ASTM D3511 (Brush Pill), Class 5

Flame Retardancy

Cal TB 117-2013, UFAC Class 1, NFPA 260

Maintenance

WS, Clean with either a water-based or solvent-based cleaning agent.
Bleach Cleanable: 9% (10:1 Ratio), wipe with water after solution
For a list of approved cleaners, visit the Resources section on the Luum website.

Environmental

Chemical Finish Free
DMF Free
Heavy Metal Free
REACH Regulation Compliant
Complies with California Section 01350 VOC Emission Standards

Origin

Korea

Dye lots may vary slightly from samples shown. Samples shown off the bolt.



Canada

877.705.LUUM
luumtextiles.ca

USA

877.705.LUUM
luumtextiles.com

International

919.464.2922
luumtextiles.com

cdn/us/int/09-25

© Luum™ 2025, all rights reserved.
*™ Trademarks used under license by Luum™, Welded 2™
*Certification Marks owned by the Association for Contract Textiles, Inc.
Abrasion test results exceeding ACT Performance Guidelines are not an indicator of product lifespan.
Multiple factors affect fabric durability and appearance retention.

U8-SC-305-4135