

Name

Earthbound

Designer

Suzanne Tick

Style No.

4146

Collection

Five Elements

Use

Upholstery

Content

54% Recycled Wool,
28% Recycled Acrylic,
7% Recycled Polyester,
8% Polyester, 3% Nylon

Abrasion

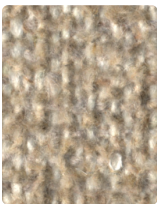
Martindale
75,000 cycles

Environmental

Recycled Content
Renewable Content
Heavy Metal Free
REACH Regulation
Compliant



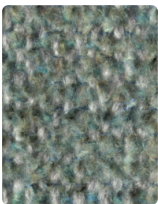
Porcelain 4146-05



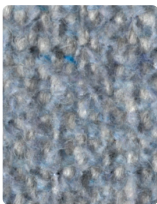
Playa 4146-06



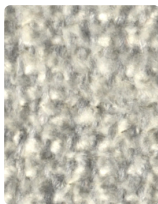
Lush 4146-09



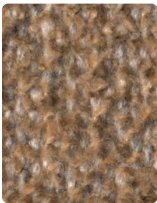
Greenbark 4146-14



Blue Soil 4146-13



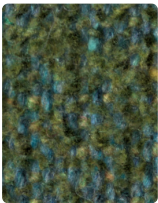
Moonglade 4146-04



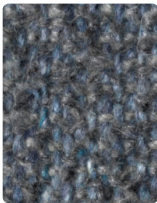
Fallow 4146-07



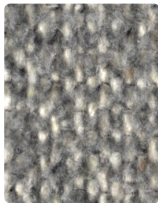
Plume 4146-10



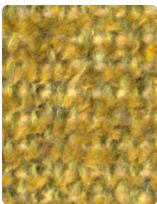
Groundcover 4146-15



Sinter 4146-02



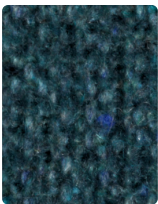
Pure Mineral 4146-03



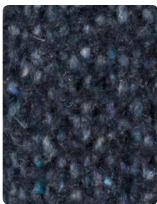
Sunstone 4146-08



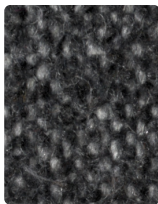
Terra Cotta 4146-11



Riverbank 4146-16



Abyssal Plain 4146-12



Native Metal 4146-01

Name

Earthbound

Style No.

4146

Designer

Suzanne Tick

Specification

Use: Upholstery
Content: 54% Recycled Wool, 28% Recycled Acrylic, 7% Recycled Polyester, 8% Polyester, 3% Nylon (Pre Consumer & Post Consumer)
Weight: 22.9 oz per linear yard
Width: 55"
Pattern Repeat: None
Directional: No

Finish

None

Performance

Abrasion: ASTM D4966 Martindale 75,000 cycles
Breaking Strength: ASTM D5034 Warp 98 lbf, Fill 68 lbf
Seam Slippage: ASTM D4034 Warp 97 lbf, Fill 68.5 lbf
Colorfastness to Light: AATCC 16, Grade 4-5 at 40 Hours
Colorfastness to Crocking: AATCC 8, Wet Class 4-5, Dry Class 5
Pilling: ASTM D4970 (Martindale), Class 3

Flame Retardancy

Cal TB 117-2013

Maintenance

S, Clean with a dry cleaning or solvent-based cleaning agent.
Do not use water-based cleaning products.

Environmental

Recycled Content
Renewable Content
Heavy Metal Free
REACH Regulation Compliant

Origin

Italy

Wool is a natural product. Color variations are part of the natural beauty of wool and are not considered a defect. Dye lots may vary slightly from samples shown. Samples shown off the bolt.



Canada

877.705.LUUM
luumtextiles.ca

USA

877.705.LUUM
luumtextiles.com

International

919.464.2922
luumtextiles.com

cdn/us/int/09-25

© Luum™ 2025, all rights reserved.
*™ Trademarks used under license by Luum™, Earthbound™
*Certification Marks owned by the Association for Contract Textiles, Inc.
Abrasion test results exceeding ACT Performance Guidelines are not an indicator of product lifespan.
Multiple factors affect fabric durability and appearance retention.

U7-SC-305-4146