

Making space  
*for the journeys  
we take.*

Transportation  
Portfolio

studio 

# Transportation design has evolved - getting from point A to point B is too transactional.

---

We need a human-centric experience to engage all of our senses; to create calm and satisfaction in an otherwise stressful moment.



## Spaces are being designed to deliver physical and emotional comfort.

---

We design amenities that allow a broad range of choice.

Studio TK resides on the forefront of purpose-driven design. We are proud to be a design standard in United Airlines waiting areas and we are featured in many other transportation hubs such as:

- Calgary Airport
- Chicago O'Hare Airport
- Dallas Fort Worth Airport
- Denver Airport
- Detroit Airport

# Table of Contents

- 01 Lounge Areas  
the places we chill
- 07 Cafe Areas  
the places we refuel
- 13 Waiting Areas  
the places we board
- 19 Product Map



I'm on low-battery  
so is my phone

queue the next  
movie download

check in with family  
because you're almost there

on time and  
in no hurry

# the places *we chill*

knock out those  
last few emails

lean back for a little while  
you're allowed

plan for the  
adventure ahead

adjust my schedule  
for tomorrow



1

2

Lounge Areas

Lounge Areas

studio TK

studio TK



Lounge furniture should be an invitation to luxury, rivaling the residential comfort of a five-star hotel. The space must offer a versatile landscape of seating, balancing open areas for dining and social engagement with secluded booths designed for deep focus and privacy.

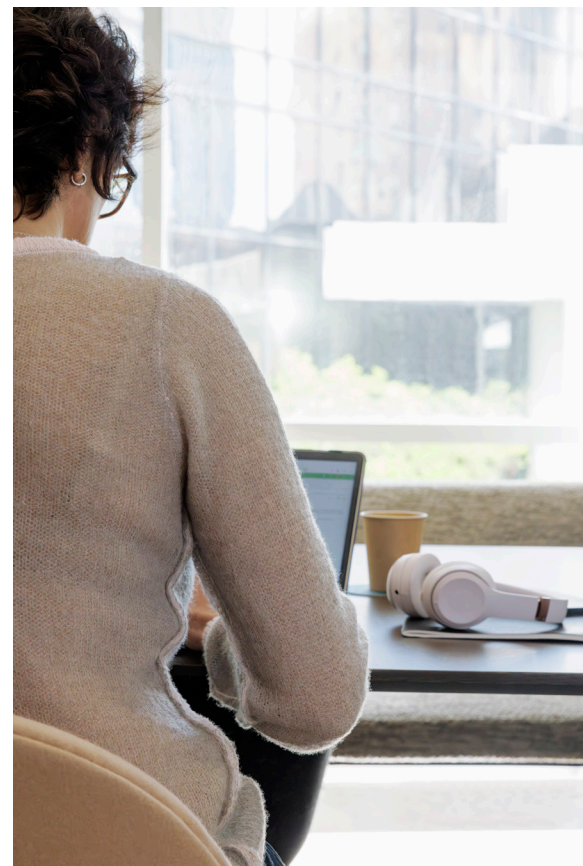
Comfort for calm. Lounge spaces ease the stress of travel and are designed to offer visitors a reprieve. Soft lighting, dynamic soundscapes, and comfortable surfaces create a multi-sensory calming experience.



Lounges are evolving into hybrid spaces where work meets hospitality, allowing travelers to regain a sense of control. In the hectic transition between land and sky, guests must be able to navigate these “neighborhoods” quickly and efficiently. Layouts should provide a clear sense of purpose: whether for a parent traveling with children or a professional catching up on emails, every zone should be intentionally designed to meet a traveler’s specific needs.



Access to power is a design necessity, not an afterthought. Integrating high-capacity outlets and USB ports directly into the environment ensures that power is seamless, intuitive, and always within reach for the user.





5

Lounge Areas

studio TK

6

Lounge Areas

studio TK

7

the places  
*we refuel*



Attention to sensory design details reduces passenger stress, making them more likely to stop for that cup of coffee rather than rush to the gate.

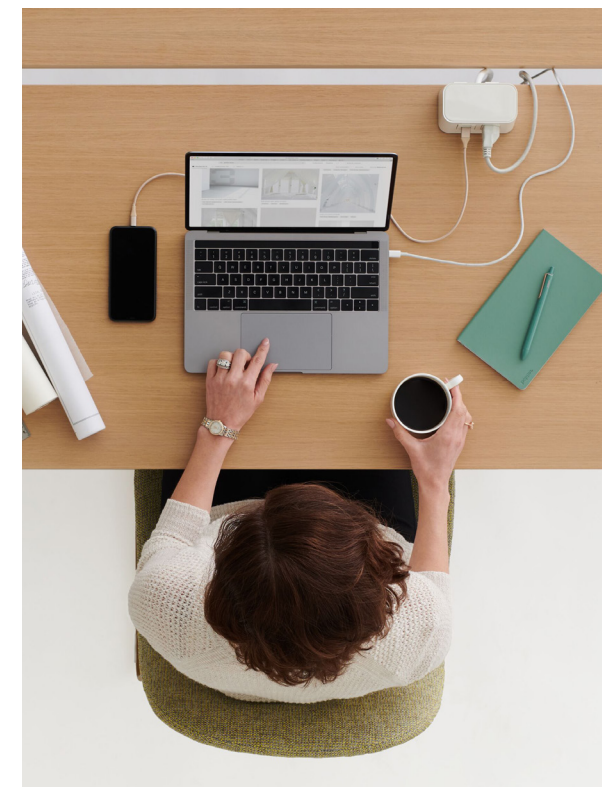


Luxury is no longer constrained to the exclusivity of a private lounge. The concourse is now becoming a lounge for everyone. A personalized passenger experience moving from the functional to bespoke for every traveler.

Transportation design has drawn on workplace learnings to encourage the selection of space types based on passenger needs and preferences. Spaces that offer all-inclusive services and amenities, such as food, beverages, electrical access, etc., are where passengers gravitate.



Super commuting to work (defined as traveling 90+ minutes to work) has surged due to new hybrid work models. Taking a flight or a train long distances once or multiple days a week requires the amenity spaces be well equipped for the needs of frequent travelers.





the places  
*we board*





Efficiency and organic movement don't have to be separate. When a design balances both, it creates spaces that travelers can actually use and enjoy.



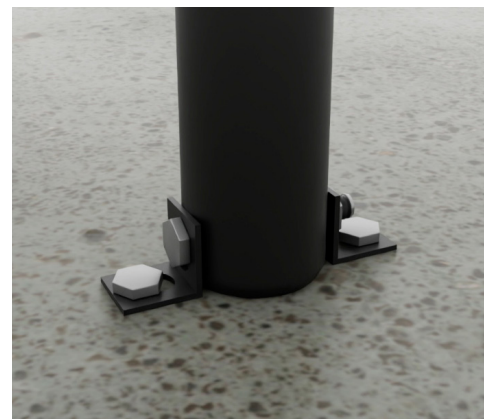
15

Personal cocoons on a hectic travel day give the weary traveler much-needed rest while waiting to board. Comfortable, generous seats provide a place to put your personal items while keeping them at arm's length when needed.

Soft seating intertwined between rows and rows of systemic benches breaks the monotony and elevates the gate experience. The mix of posture choices creates a more desirable experience for travelers, leading them to spend more time in these comfortable moments.

16

The ability to anchor pieces to the floor may become necessary in waiting areas to keep the space segmented per the design intent.



Access to power within soft seating allows beauty and function to meet.



Waiting Areas

studio TK

Waiting Areas

studio TK



17

18

Waiting Areas

Waiting Areas

studio TK

studio TK

Portfolio Seating



Adventura

**BIFMA Certified**



Africa

**BIFMA Certified**



Ballad Lounge

**BIFMA Certified**



Ballad Plastic Chair

**BIFMA Certified**



Ballad Plastic Stool

**BIFMA Certified**



Ballad Upholstered Chair

**BIFMA Certified**



Ballad Upholstered Stool

**BIFMA Certified**



Beso

**BIFMA Certified**



Borough Lounge

**BIFMA Certified**



Cesto

**BIFMA Certified**



Clique

**BIFMA Certified**



Clique Luxe

**BIFMA Certified**



Delta

**BIFMA Certified**



Fractals Seating

**BIFMA Certified**



Havn\*

**BIFMA Certified**



Kalm

**BIFMA Certified**



Kes

**BIFMA Certified**



Libelle

**BIFMA Certified**



Modus Bob

**BIFMA Certified**



Modus Maluma

**BIFMA Certified**



Petal

**BIFMA Certified**



Qui Ottoman

**BIFMA Certified**



Santé

**BIFMA Certified**



Trine

**BIFMA Certified**



Vettore

**BIFMA Certified**

Portfolio Tables



Bevy Occasional

**BIFMA Certified**



Bevy Pedestal

**BIFMA Certified**



Borough Tables\*

**BIFMA Certified**



Cesto Tables

**BIFMA Certified**



Fractals Nook

**BIFMA Certified**



Freehand

**BIFMA Certified**



Mari-Sol Tables

**BIFMA Certified**



Minuta

**BIFMA Certified**



Modus Abe

**BIFMA Certified**



Modus Arne

**BIFMA Certified**



Modus Art

**BIFMA Certified**



Ora

**BIFMA Certified**



Rec Tables

**BIFMA Certified**



Sly Tables

**BIFMA Certified**



Waltz

**BIFMA Certified**

\*NOTE | Studio TK does not suggest the use of solid wood frames or products to be used in high traffic areas such as cafe's and waiting areas in Transportation spaces. The use of these products in private lounges with lower traffic volumes would be permitted.



studio | <