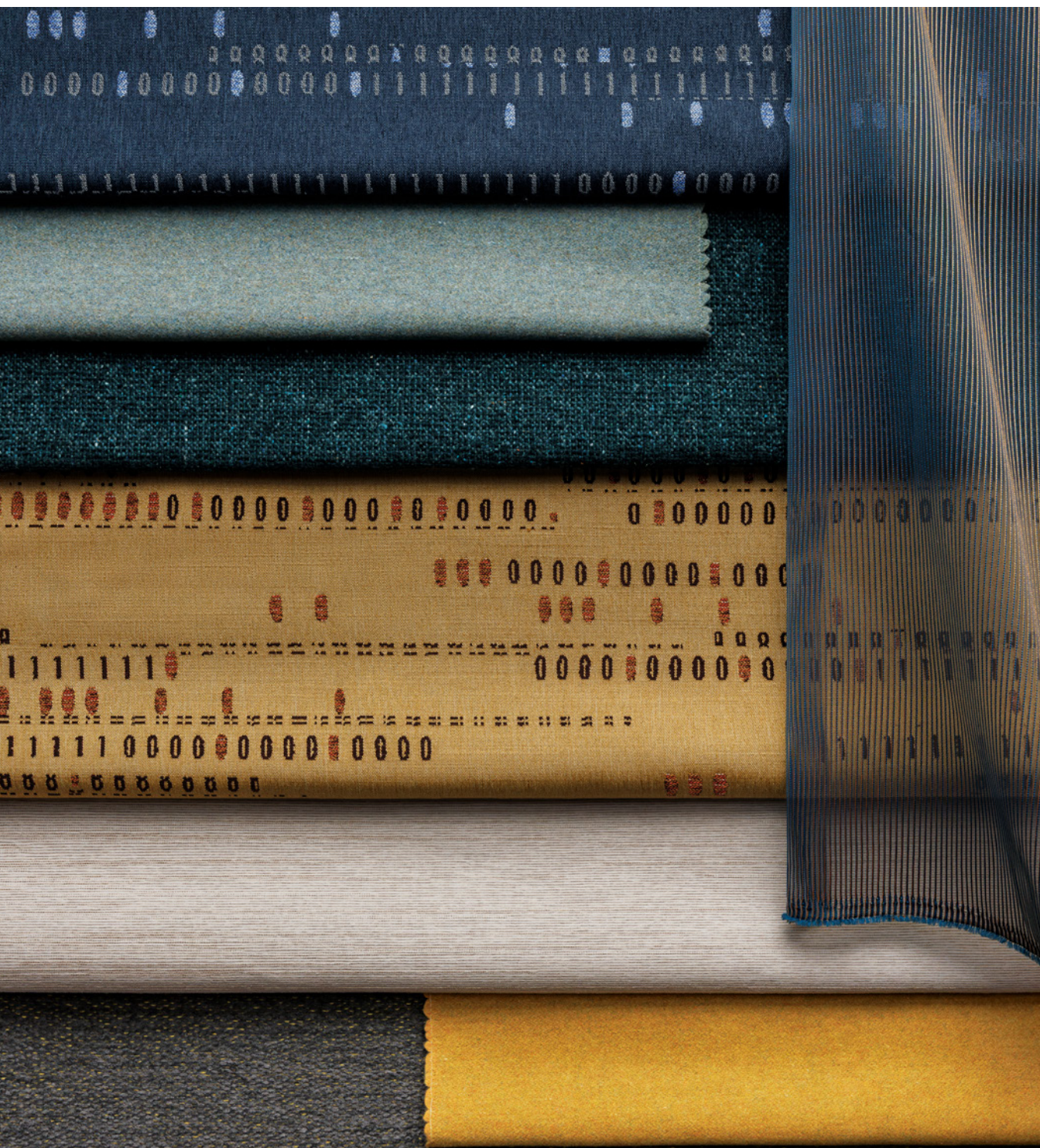


LUUM

Five Elements Collection



Five Elements Collection

Inspired by the eternal balance of earth, water, fire, air, and space, the *Five Elements* collection by Suzanne Tick for Luum features five styles that introduce natural forces into the built environment through mindful materiality and expressive design. Rooted in sustainable innovation, the collection features responsibly-sourced fibers and ecological manufacturing processes from our partners. Pairing luxury performance with reduced environmental impact, *Five Elements* meets the needs of today's public spaces without compromise.

Each aspect of this dynamic grouping can trace its origin back to nature: textures inspired by landscapes, patterns that echo the rhythm of water, color combinations drawn from flame and light, and weaves that feel airy and open. Together, they create environments that are both visually engaging and supportive of our well-being. *Five Elements* begins with intention and treats every material choice as an opportunity to create connection.





Collection: Five Elements
Designer: Suzanne Tick

Use: Upholstery

Grounded in a large-scale, tri-color pattern, *Spatial Element* draws inspiration from early industrial punchcards. The code translates into a geometric pattern that's softened by a thoughtful color palette. Woven with recycled polyester fibers to perform in high-traffic spaces, the palette is available in eight bleach cleanable colorways.

1 ——— Spatial Element

Content: 52% Post Consumer Recycled Polyester, 48% Polyester

Number of Colorways: 8

(shown on chair): Asteroid Belt

(shown here, left to right): Deep Sky, Zenith, Asteroid Belt, Moonlet, Starfield

Abrasion: Wyzenbeek 100,000 double rubs

Special Characteristics: Bleach Cleanable, Recycled Content, Oeko-Tex 100 Cat II, REACH Regulation Compliant



2 ——— Radiant Flux

Airy and ethereal, *Radiant Flux* is a wide-width iridescent drapery that dances with light. Whether hung railroaded or off-the-bolt, its lightweight sheer construction has a luminous dimension that adds color and softness. Each colorway contains two complementary weft yarns that create a polychromatic vertical ribbed effect. Offered in 12 colorways, *Radiant Flux* invites calm and curiosity to a space.

Use: Drapery

Content: 100% Trevira® CS Polyester

Width: 126"

Number of Colorways: 12 (*shown here*): Orion

Special Characteristics: Oeko-Tex 100 Certified

3 ——— Confluence

Subtle but impactful, *Confluence* direct glue features a tonal, large-scale pattern that makes an understated, tactile presence. Inspired by waterways meeting, *Confluence*'s jacquard weave structure merges and dissolves, adding movement when applied to walls. Designed for durability, ease of installation, and bleach cleanability, it supports a broad range of applications including workplace, wellness, and hospitality.

Use: Direct Glue Wall

Content: 51% Post Consumer Recycled Polyester, 49% Polyester

Number of Colorways: 7 (*shown here, top to bottom*): Rhine, Thames, Ganges, Tigris, Seine

Special Characteristics: Bleach Cleanable, Recycled Content, Heavy Metal Free, North American Made, PFAS Free Stain Repellent

4 ——— Earthbound

Crafted from pre- and post-consumer garment waste, *Earthbound* chenille upholstery tells a story of renewal. The recycled straight and chenille yarns are woven into a dimensional surface texture with multicolor flecks. Part of Luum's garment waste platform, *Earthbound* shares yarn components with *Melange Check*, *Wool Fleck*, *Graph Speck*, *Everyday Boucle*, *Forward Motion*, and *Stability*—offering easy palette development.

Use: Upholstery

Content: 54% Recycled Wool, 28% Recycled Acrylic, 7% Recycled Polyester, 8% Polyester, 3% Nylon (Pre Consumer & Post Consumer)

Number of Colorways: 16 (*shown here, top to bottom*): Plume, Pure Mineral, Fallow, Terra Cotta, Native Metal

Abrasion: Martindale 75,000 cycles

Special Characteristics: Recycled Content, Renewable Content, Heavy Metal Free, REACH Regulation Compliant

5 ——— Chenille Appeal

With its plush, soft surface, *Chenille Appeal* upholstery invites touch wherever it's applied. This rich texture is created with recycled chenille yarns, where lighter-colored weft yarns overlap with darker warp colors to create depth and contrast. Constructed with recycled polyester and SEAQUAL® YARN from marine plastic, *Chenille Appeal* is engineered for performance in 12 bleach-cleanable colorways.

Use: Upholstery

Content: 62% Post Consumer Recycled Polyester, 20% Polyester, 18% Post Consumer Recycled Polyester SEAQUAL® YARN

Number of Colorways: 12 (*shown here, left to right*): Crottle, Silver Spring, Celery, Russet, Flaxen

Abrasion: Wyzenbeek 100,000 double rubs

Special Characteristics: Bleach Cleanable, Recycled Content, Chemical Finish Free, Heavy Metal Free, SEAQUAL MARINE PLASTIC® Content, North American Made



luumtextiles.com

USA, Canada 877.705.LUUM International 919.464.2922

This brochure uses post consumer recycled fiber and is printed using water based, fully recyclable inks.



1. Spatial Element

3. Confluence

4. Earthbound

