

**Name**

Spatial Element

**Designer**

Suzanne Tick

**Style No.**

4147

**Collection**

Five Elements

**Use**

Upholstery

**Content**

52% Recycled Polyester,  
48% Polyester

**Abrasion**

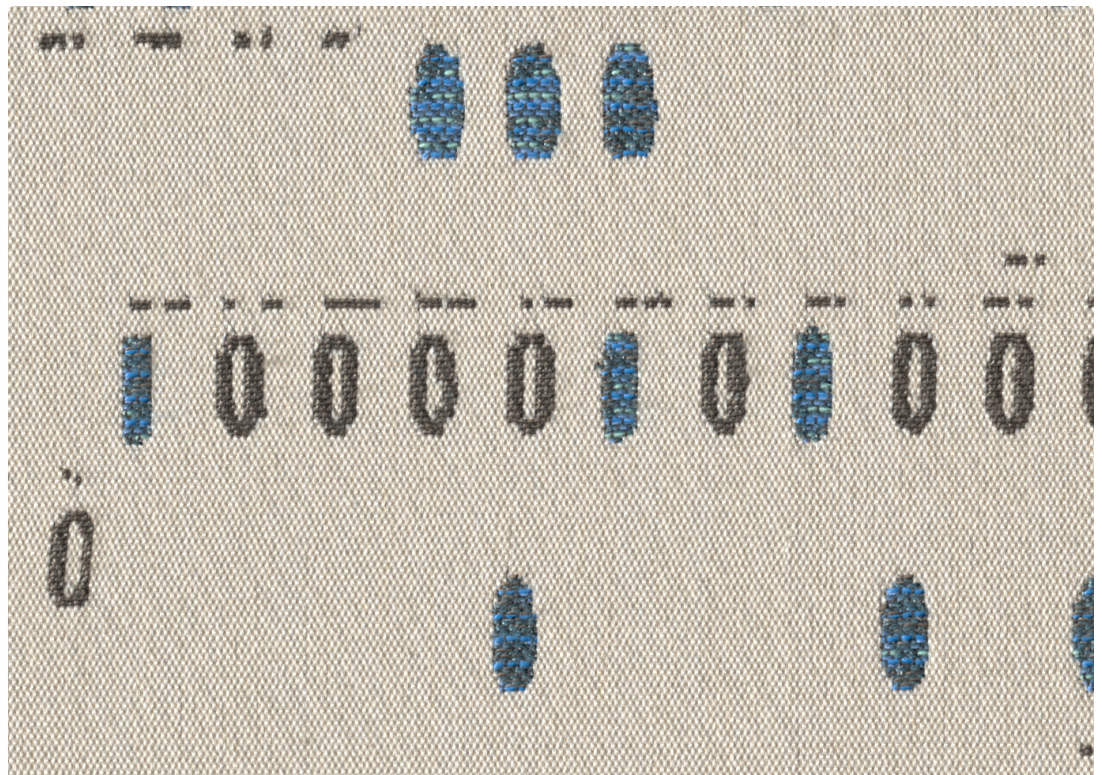
Wyzenbeek  
100,000 double rubs

**Special Characteristics**

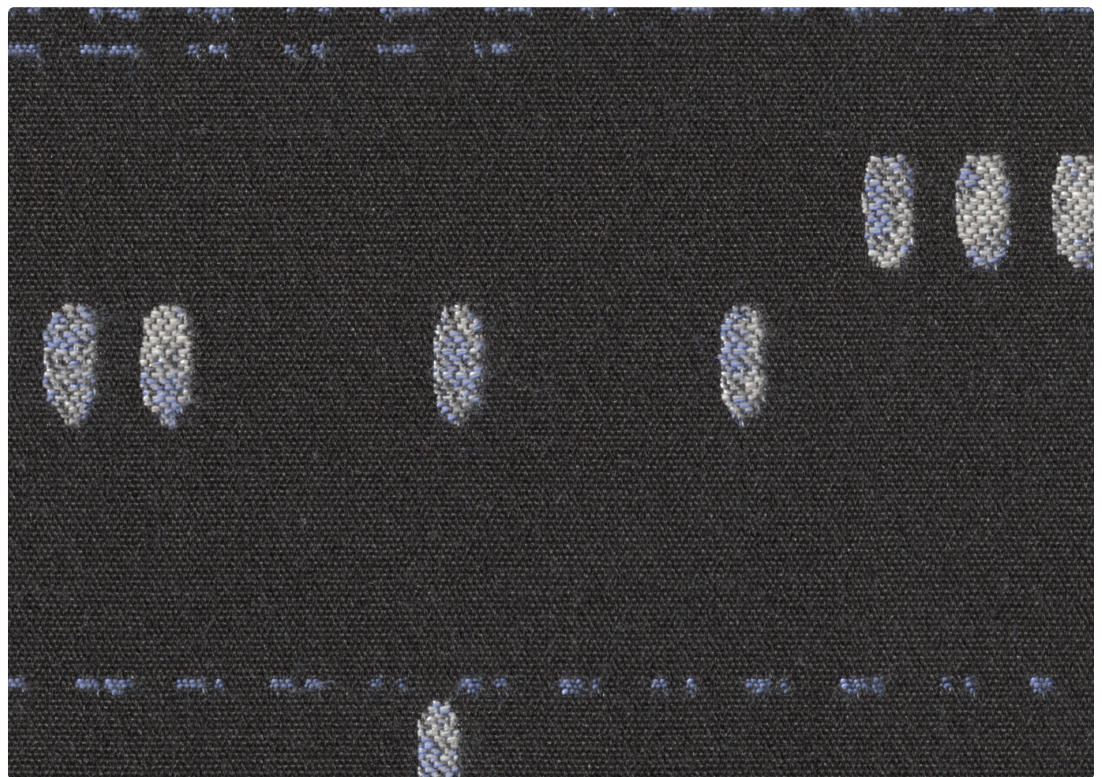
Bleach Cleanable

**Environmental**

Recycled Content  
Oeko-Tex 100 Certified  
REACH Regulation  
Compliant



Moonlet 4147-03



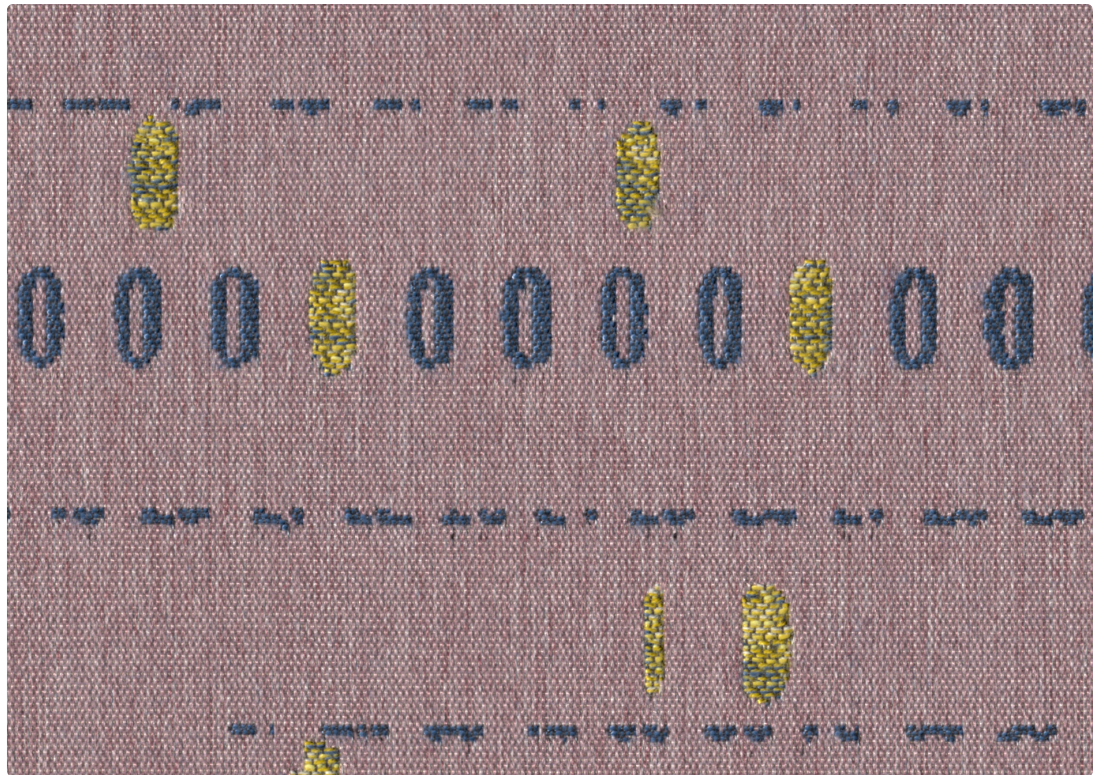
Starfield 4147-01



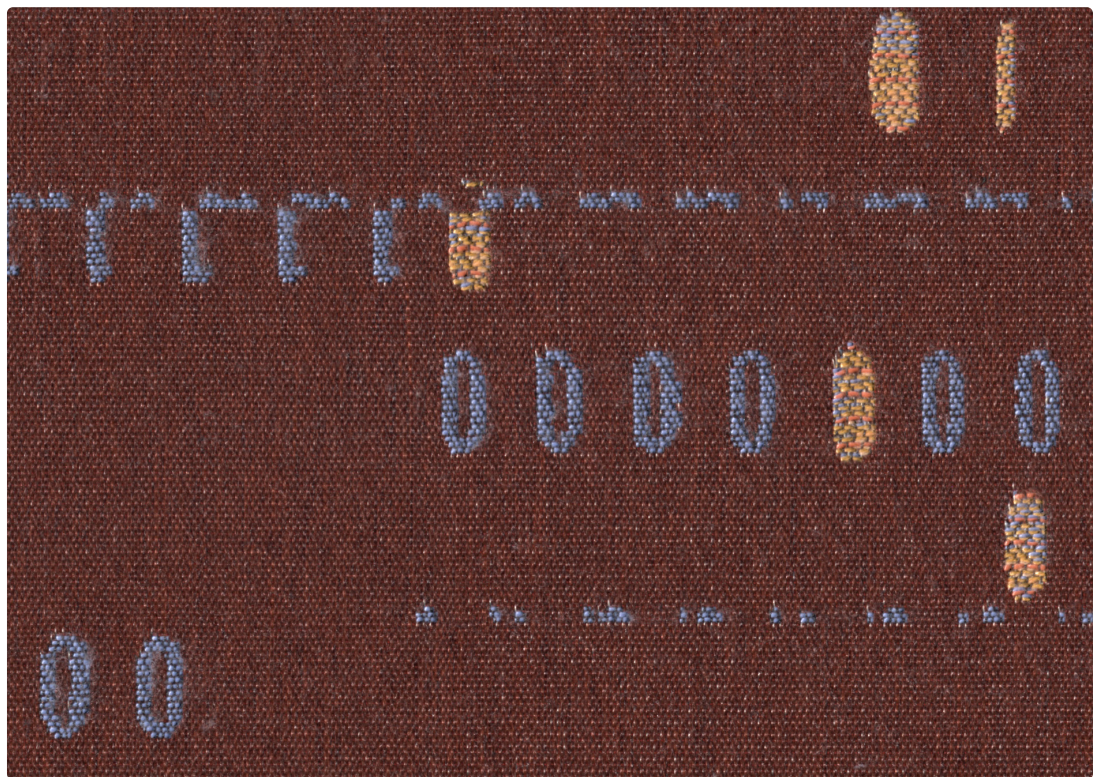
Lightyear 4147-05



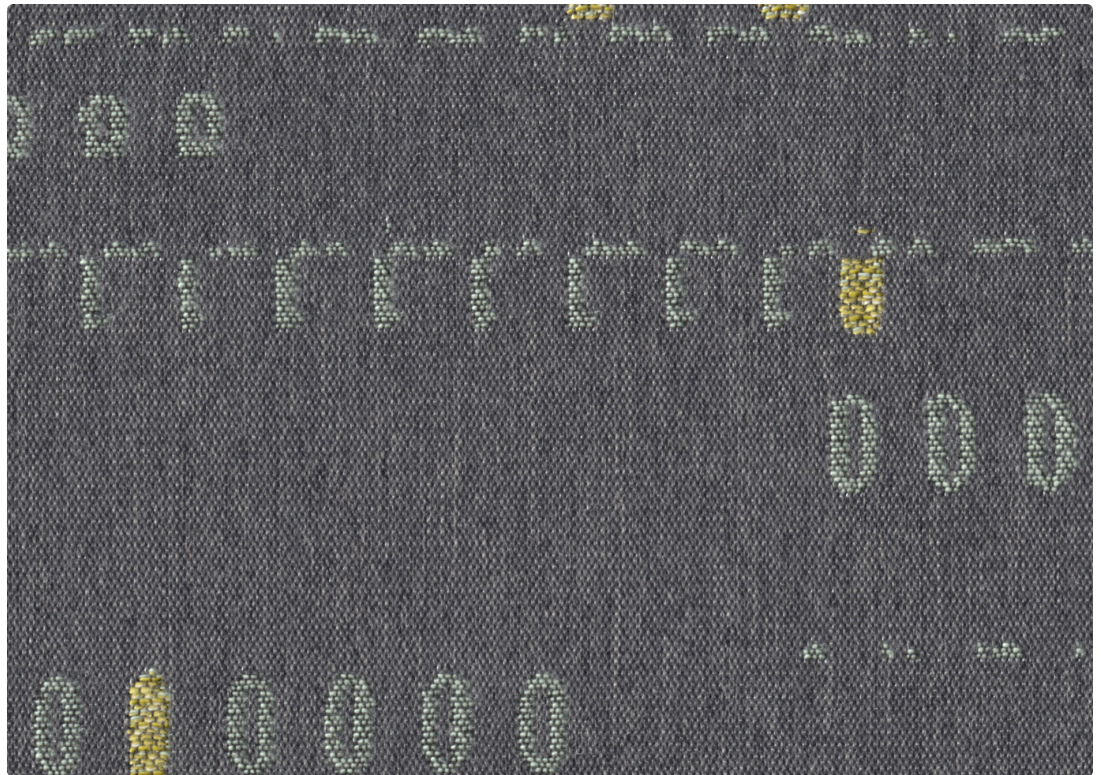
Zenith 4147-04



Cosmic Dust 4147-06



Solar Storm 4147-07



Asteroid Belt 4147-02



Deep Sky 4147-08

Name **Spatial Element**

Style No. **4147**

Designer Suzanne Tick

Specification Use: Upholstery  
Content: 52% Post Consumer Recycled Polyester, 48% Polyester  
Weight: 27.42 oz per linear yard  
Width: 54"  
Pattern Repeat: 27.56" Horizontal, 20.47" Vertical  
Directional: Yes

Finish None

Performance Abrasion: ASTM D4157 Wyzenbeek 100,000 double rubs  
Breaking Strength: ASTM D5034 Warp 411 lbf, Fill 515 lbf  
Seam Slippage: ASTM D4034 Warp 114.5 lbf, Fill 79.5 lbf  
Colorfastness to Light: AATCC 16, Grade 4 at 40 Hours  
Colorfastness to Crocking: AATCC 8, Wet Class 5, Dry Class 4-5  
Pilling: ASTM D3511 (Brush Pill), Class 5

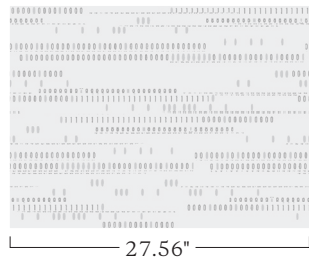
Flame Retardancy Cal TB 117-2013

Maintenance W, Clean with a water-based cleaning agent. Do not use solvent products.  
Bleach Cleanable: 9% (10:1 Ratio), wipe with water after solution.

Environmental Recycled Content  
Oeko-Tex 100 Certified  
REACH Regulation Compliant

Origin Italy

Dye lots may vary slightly from samples shown. Samples shown off the bolt.



20.47" Graphic shows one full repeat.

**Canada**  
877.705.LUUM  
luumtextiles.ca

**USA**  
877.705.LUUM  
luumtextiles.com

**International**  
919.464.2922  
luumtextiles.com

cdn/us/int/09-25

© Luum™ 2025, all rights reserved.

\*™ Trademarks used under license by Luum™, Spatial Element™

\*Certification Marks owned by the Association for Contract Textiles, Inc.

Abrasion test results exceeding ACT Performance Guidelines are not an indicator of product lifespan.

Multiple factors affect fabric durability and appearance retention.

U8-SC-305-4147