

Name

Etch

Designer

Luum Creative Studio

Style No.

7023

Collection

Craft Work

Use

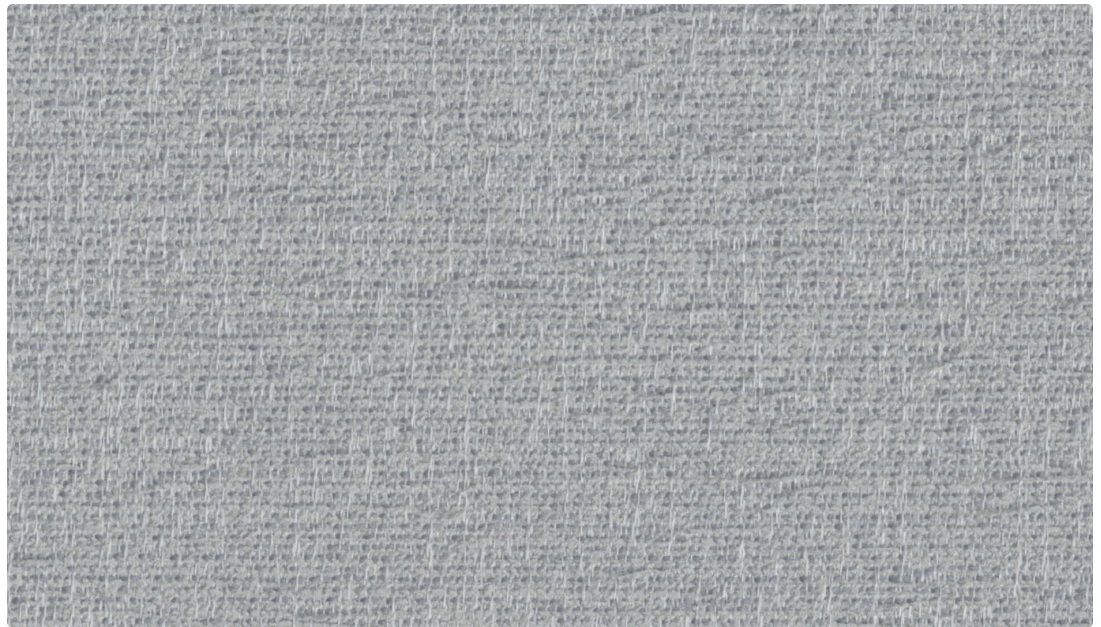
Direct Glue Wall

Content

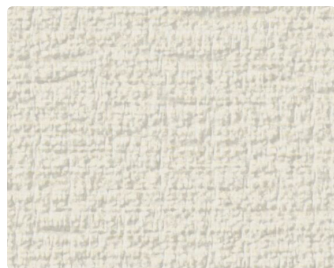
67% Recycled Polyester,
33% Polyester

Special Characteristics

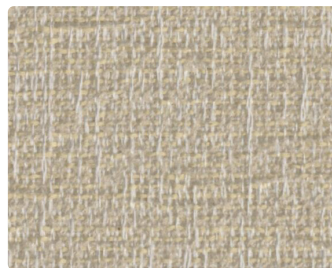
Bleach Cleanable
Reduced Environmental
Impact



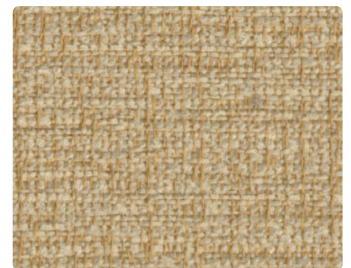
Tin 7023-08



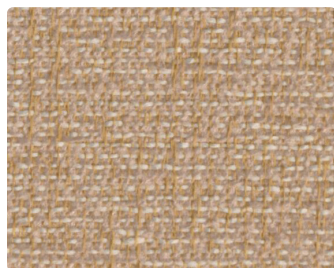
Cocoon 7023-01



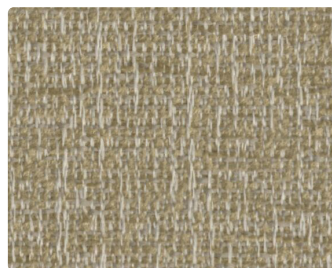
Hemp 7023-02



Straw 7023-05



Cattail 7023-03



Tussah 7023-06



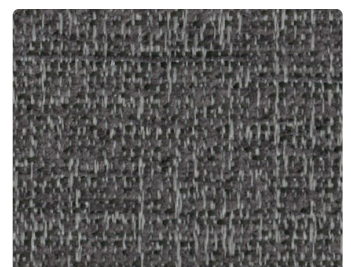
Raindrop 7023-07



Jute 7023-04



Silver 7023-09



Ash 7023-10

Name **Etch**

Style No. **7023**

Designer Luum Creative Studio

Use Direct Glue Wall

Specification
Content: 67% Post Consumer Recycled Polyester, 33% Polyester
Weight: 12.2 oz per linear yard
Width: 54"
Pattern Repeat: None
Finish: PFAS Free Stain Repellent
Backing: Acrylic

Performance
Lightfastness: AATCC 16, 40 Hours
Flammability: ASTM E84 Adhered Class A or 1

Maintenance
WS, Clean with either a water-based or solvent-based cleaning agent.
Bleach Cleanable: 9% (10:1 Ratio), wipe with water after solution.

Sustainability
Reduced Environmental Impact, visit luumtextiles.com for more information.

Origin USA

Note
Dye lots may vary slightly from samples shown. Samples shown off the bolt.
Variations in texture are a characteristic of this product.
For installation guidelines, visit the Resources section of the Luum website.



ACT® Registered Certification Marks

Canada
877.705.LUUM
luumtextiles.ca

USA
877.705.LUUM
luumtextiles.com

International
919.464.2922
luumtextiles.com

cdn/us/int/05-26

© Luum® 2026, all rights reserved.
*,™ Trademarks used under license.

A3-SC-305-7023