

Name

Dori

Designer

Dorothy Cosonas

Style No.

4154

Collection

Craft Work

Use

Upholstery

Content

Ground: 90% Recycled Polyester, 10% Linen
Embroidery: 70% Polyester, 30% Viscose

Abrasion

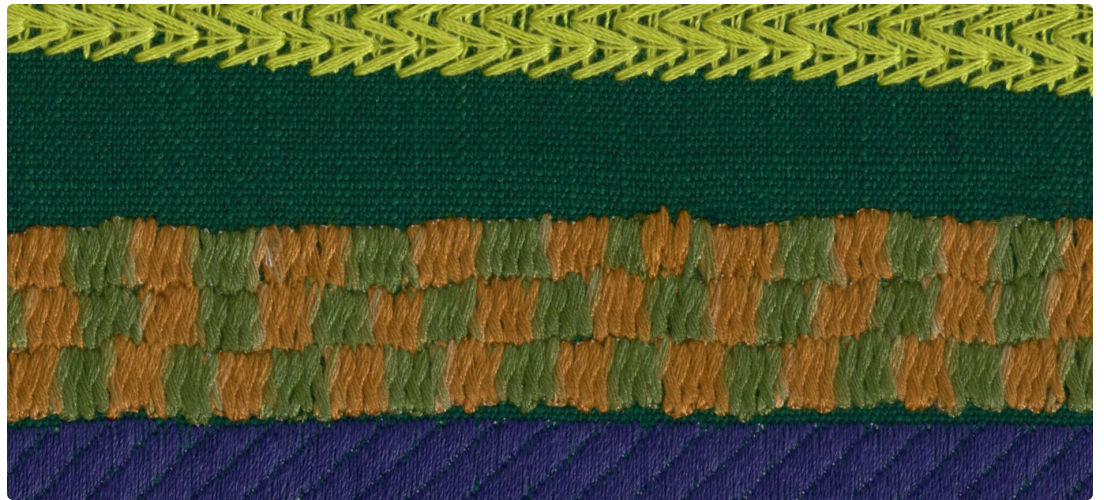
Wyzenbeek 100,000 double rubs

Special Characteristics

Reduced Environmental Impact



Whisper 4154-01



Emerald 4154-02



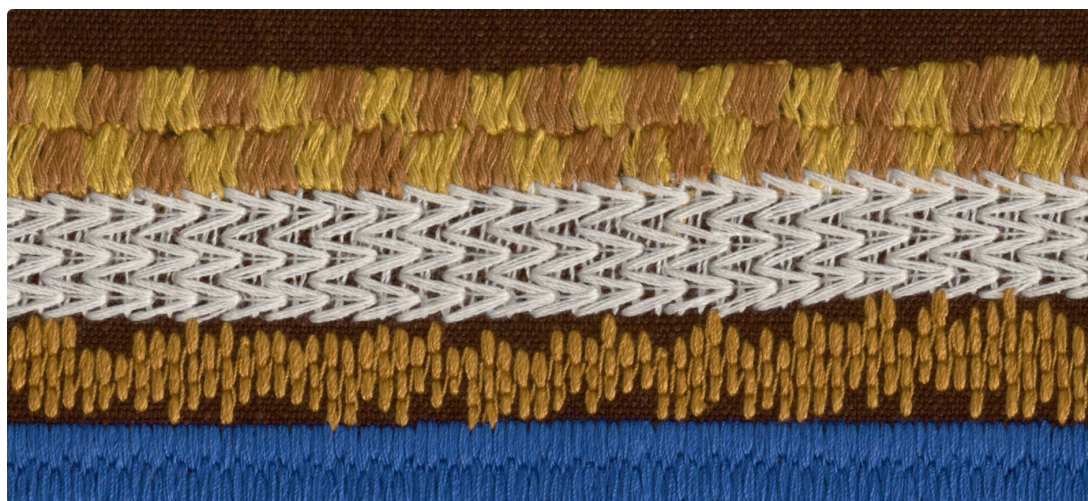
Azure 4154-03



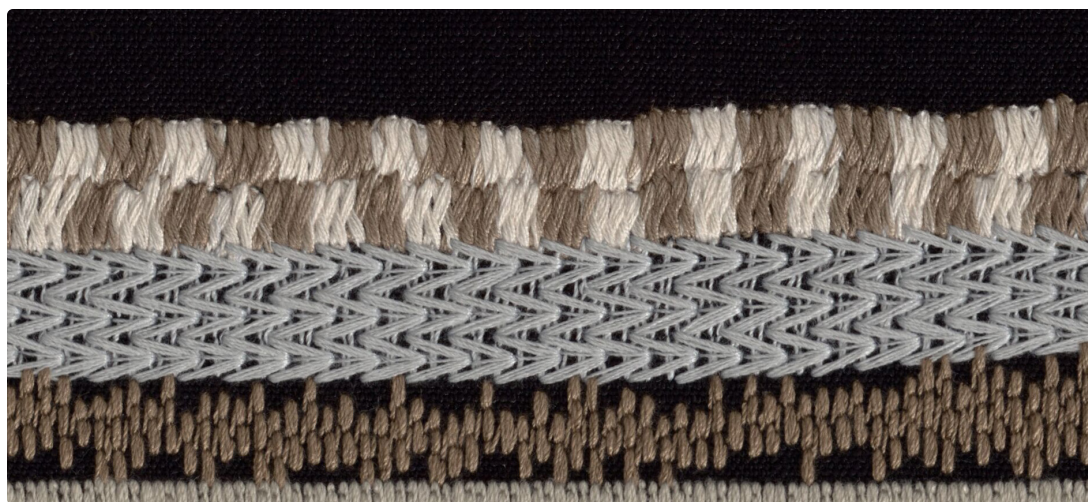
Indigo 4154-04



Beetroot 4154-05



Harvest 4154-06



Lunar 4154-07

Name **Dori**

Style No. **4154**

Designer Dorothy Cosonas

Use Upholstery

Specification **Content:** Ground: 90% Pre Consumer Recycled Polyester, 10% Linen
Embroidery: 70% Polyester, 30% Viscose
Weight: 37.9 oz per linear yard
Width: Ground: 56"
Embroidery: 53"
Pattern Repeat: Horizontal 26.5", Vertical 15"
Finish: None

Performance **Abrasion:** Wyzenbeek 100,000 double rubs
Lightfastness: AATCC 16, 40 Hours
Flammability: Cal TB 117-2013

Maintenance S, Clean with a dry cleaning or solvent-based cleaning agent.
Do not use water-based cleaning products.

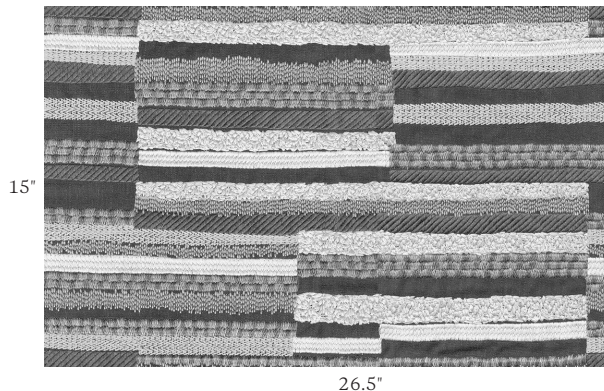
Sustainability Reduced Environmental Impact, visit luumtextiles.com for more information.

Origin India

Note Dye lots may vary slightly from samples shown. Samples shown off the bolt.
Slight pattern variation is a characteristic of embroidered products.



ACT® Registered Certification Marks



Graphic shows one full repeat.

Canada
877.705.LUUM
luumtextiles.ca

USA
877.705.LUUM
luumtextiles.com

International
919.464.2922
luumtextiles.com

cdn/us/int/05-26

© Luum® 2026, all rights reserved.

®/™ Trademarks used under license.

Abrasion test results exceeding ACT Performance Guidelines are not an indicator of product lifespan.
Multiple factors affect fabric durability and appearance retention.

U15-SC-305-4154