

**Name**

Roam

**Designer**

Luum Creative Studio

**Style No.**

4155

**Collection**

Craft Work

**Use**

Upholstery

**Content**

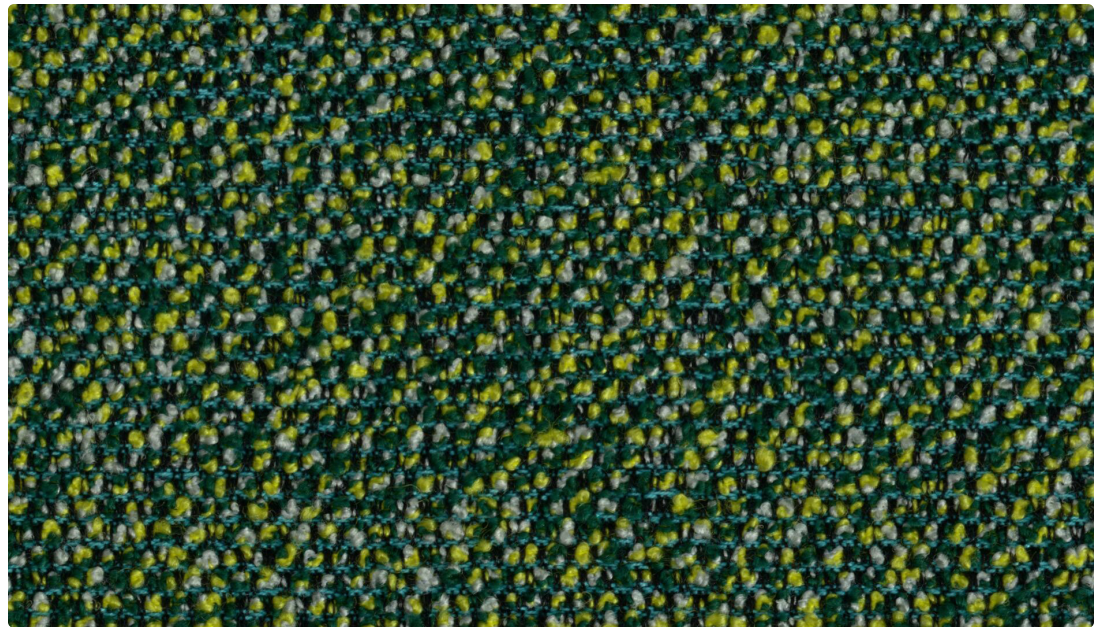
30% Polyester,  
26% Acrylic, 26% Wool,  
13% Cotton, 5% Nylon

**Abrasion**

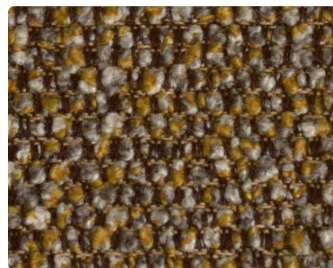
Wyzenbeek  
70,000 double rubs

**Special Characteristics**

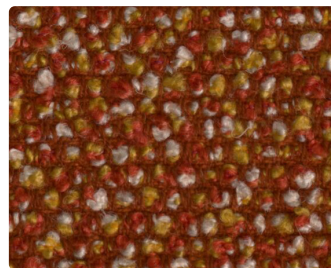
Reduced Environmental  
Impact



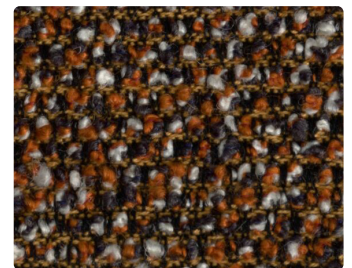
Topiary 4155-07



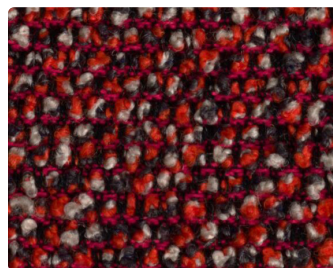
Prairie 4155-01



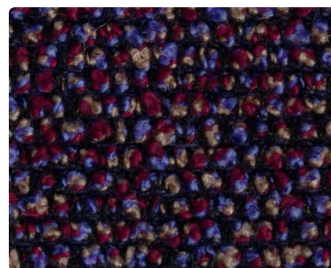
Safari 4155-02



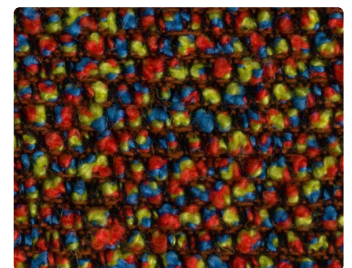
Highlands 4155-03



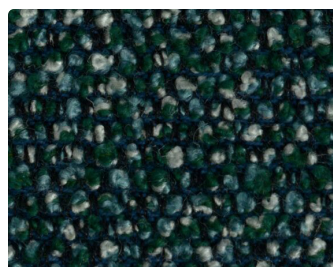
Wilderness 4155-04



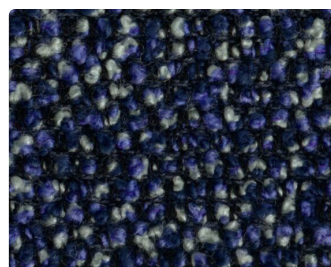
Labyrinth 4155-05



Garden 4155-06



Rainforest 4155-08



Seaside 4155-09



Cityscape 4155-10

Name **Roam**

Style No. **4155**

Designer Luum Creative Studio

Use Upholstery

Specification  
**Content:** 30% Polyester, 26% Acrylic, 26% Wool, 13% Cotton, 5% Nylon  
**Weight:** 24.5 oz per linear yard  
**Width:** 54"  
**Pattern Repeat:** None  
**Finish:** None  
**Backing:** None

Performance  
**Abrasion:** Wyzenbeek 70,000 double rubs  
**Lightfastness:** AATCC 16, 40 Hours  
**Flammability:** Cal TB 117-13

Maintenance  
S, Clean with a dry cleaning or solvent-based cleaning agent.  
Do not use water-based cleaning products.

Sustainability  
Reduced Environmental Impact, visit [luumtextiles.com](http://luumtextiles.com) for more information.

Origin Italy

Note  
Dye lots may vary slightly from samples shown. Samples shown off the bolt.



ACT® Registered Certification Marks

**Canada**  
877.705.LUUM  
[luumtextiles.ca](http://luumtextiles.ca)

**USA**  
877.705.LUUM  
[luumtextiles.com](http://luumtextiles.com)

**International**  
919.464.2922  
[luumtextiles.com](http://luumtextiles.com)

cdn/us/int/05-26

© Luum® 2026, all rights reserved.

®/™ Trademarks used under license.

Abrasion test results exceeding ACT Performance Guidelines are not an indicator of product lifespan.  
Multiple factors affect fabric durability and appearance retention.

U9-SC-305-4155